

LawnMaster®



26CC BENT SHAFT **LINE TRIMMER**

SAFETY AND OPERATING MANUAL

PLEASE READ THIS MANUAL CAREFULLY BEFORE OPERATING THE UNIT

B261



A STEELFORT PRODUCT



PROUDLY
NZ OWNED



TABLE OF CONTENTS

OPERATOR SAFETY	3
GETTING STARTED	4
Assembly	
FEATURES & TECHNICAL DATA	6
OPERATION	7
Fuel & Oil Mixture	
Rules for Operation	
Preparing for Operation	
STARTING THE TRIMMER	8
Cutting with Nylon Head	
MAINTENANCE & STORAGE	12
Air Filter	
Fuel Filter	
Change Spark Plug	
TROUBLESHOOTING	14
WARRANTY	15

Thank you for purchasing our LawnMaster B261 Line Trimmer, the information container within this manual will help you to have many years of safe and trouble free use of this LawnMaster product

OPERATOR SAFETY

SAFETY RULES

This manual contains important safety information and instructions to operate the LawnMaster Bent Shaft Line Trimmer

PLEASE READ THIS MANUAL CAREFULLY BEFORE USING THE UNIT.

Failure to adhere to the safety instructions could result in property damage and/or serious personal injury.

This manual should be considered a permanent part of the line trimmer and should remain with the unit at all times. All information in this publication is based on the latest product information available at the time of printing.

Product Information and specifications can be altered and/or improved without notice. Content from this publication may not be reproduced without written consent.

DANGER

Indicates a hazardous situation which, if not strictly complied with, will result in substantial property damage and or serious injury.

WARNING

Indicates a hazardous situation which, if not strictly complied with, may result in property damage

CAUTION

Indicates a hazardous situation which, if not strictly complied with, could result in property damage or personal injury.

The warnings and precautions discussed in this manual does not cover all possible conditions and or scenarios that may occur.

It must be understood by the operator that common sense and caution must be taken into consideration

when operating this product, as these are factors which cannot be built into this manual.

DANGER

TOXIC FUMES

- The exhaust of the engine contains carbon monoxide, an odorless, colorless poison gas. Using the engine in confined/indoor spaces can be extremely dangerous and life threatening.

FIRE

- When operating the unit, the engine may create sparks that could trigger fires.
- When operating around dry vegetation such as agricultural crops, forest, bush, grass, or other similar environments please be careful.
- This engine may not be equipped with a spark arresting muffler. In some countries and regions, a spark arrester is required by law. Please contact your local council and or fire agency for laws and regulations relating to fire prevention requirements.
- Petrol is highly flammable and explosive. A fire and or explosion from petrol can cause severe burns or result in serious personal injury including death.
- Keep flammable items away while handling petrol. Fill fuel tank outdoors and in a well ventilated area with the engine stopped.
- Always wipe spilled fuel and wait until the fuel has dried before starting the engine.
- DO NOT operate the engine with known leaks in the fuel system. Use proper fuel storage and handling procedures.
- Empty the fuel tank before storing or transporting the line trimmer.
- Keep fire extinguisher handy at all times.

HOT SURFACE

- Running the trimmer will produce heat and severe burns may occur upon contact. DO NOT touch the engine while under operation or just after stopping the unit.
- Avoid contact with hot exhaust gases and or hot surfaces.
- Maintain at least 1m of clearance on all sides to ensure adequate cooling. Combustible material can catch fire upon contact. Maintain at least 3m of clearance from combustible materials.

GENERAL WARNINGS

- Before use, check for loose or damaged parts, signs of oil or fuel leaks, and any other condition that may impact operation.
- Repair or replace all damaged and or defective parts immediately.
- Locate all operating controls and safety labels.
- Make sure all the safety instructions are in correct working condition.
- Keep all safety guards in place and in proper working order at all times.
- DO NOT allow any material to block the cooling slots.
- DO NOT allow children or untrained people to operate the unit.
- Read the instructions carefully. Be familiar with the controls and the proper use of the appliance.
- This product has been designed for use in cutting grass, and it should never be used for any other purpose.
- Never use while people, especially children, or pets are nearby.
- The operator or user is responsible for accidents or hazards occurring to other people or their property.
- Avoid running the engine indoors. The exhaust gases contain harmful carbon monoxide.
- Store fuel in an approved container that meets New Zealand standards.
- Do not smoke while mixing fuel or during filling the fuel tank.
- Do not mix fuel in an enclosed room or near a open flame, ensure adequate ventilation.
- Don't remove fuel tank cap while engine is running.
- Never make engine adjustments while the engine is running and strapped to the operator.

PREPARATION

- While cutting, always wear substantial footwear and long trousers.

- Do not operate the appliance when barefoot or wearing open sandals.
- Thoroughly inspect the area where the appliance is to be used and remove all stones, sticks, wires, bones, and other foreign objects.
- Before using, always visually inspect to see that the nylon head, head bolts assembly are not worn or damaged. Replace worn or damaged nylon head and bolts in sets to preserve balance.
- Always wear ear & eye protection when operating the B261 trimmer.

OPERATION

- Operate only in daylight or in good artificial light.
- Avoid operating the appliance in wet grass, where feasible.
- Always be sure of your footing on slopes.
- Exercise extreme caution when changing direction on slopes.
- Do not cut on excessively steep slopes.
- Use extreme caution when reversing or pulling the appliance towards you.
- Never operate the appliance with defective guards or shields, or without safety devices.
- Switch on the motor according to instructions and with feet well away from the cutter.
- In this case, do not tilt it more than absolutely necessary and lift only the part which is away from the operator. Always ensure that both hands are in the operating position before returning the appliance to the ground.
- Do not put hands or feet near or under rotating parts.
- Pull the spark from the socket: before clearing a blockage; before checking, cleaning or working on the appliance.
- Inspect the appliance for damage and make repairs as necessary.
- If the appliance starts to vibrate abnormally (check immediately).
- Do not operate when tired, ill, or under the influence of drugs, alcohol or medication.
- Stop the engine and let it cool before refueling. Never refuel while the engine is running or hot.

GETTING STARTED

The line trimmer is a high-speed cutting tool. Follow safety precautions to reduce the risk of injury. Read the manual and familiarize yourself with the controls before use. It is designed for cutting grass only, not for other purposes. Use it for private garden use only, not in public areas or farms.

ASSEMBLY

When assembling this machine, please follow the instructions for assembly printed.

MOUNTING THE SHAFT

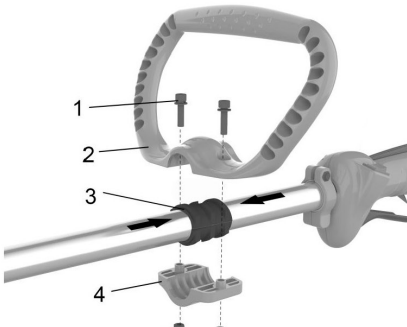
- Push the lower part of the shaft (b) right down until the stop pin (a) slots into the hole (c) in the shaft. This is easier to do if you rotate the bottom of the shaft (b) slightly in both directions. The pin (a) is in place when it is completely lodged in the hole.



- Lastly, tighten the knob (d) securely

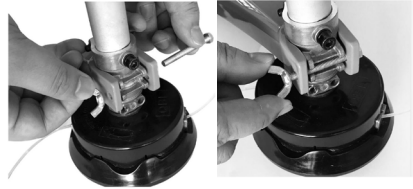
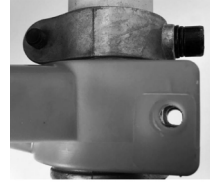
ASSEMBLE THE HANDLE

- Put left handle rubber cover (3) on the shaft between the two arrow positioning label, fix the upper handle (2) with lower handle (4) to the tube with screws (1) and nuts (5) tightly enough.



ASSEMBLE THE SAFE GUARD

- Align the hole of the guard with the hole of metal connector, insert the screw into hole of guard and connector, tighten it.

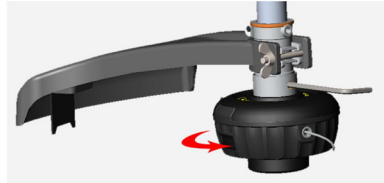


WARNING

Use only original manufacturer's replacement parts, accessories and attachments. Failure to do so can cause poor performance, possible injury and may void your warranty. Never use the machine without the guard assembled!

ASSEMBLE THE NYLON HEAD

- Insert the hex wrench into the hole to fix the connector, then put the nylon head to the connector shaft, turn the nylon head clockwise till it is assembled tightly enough.

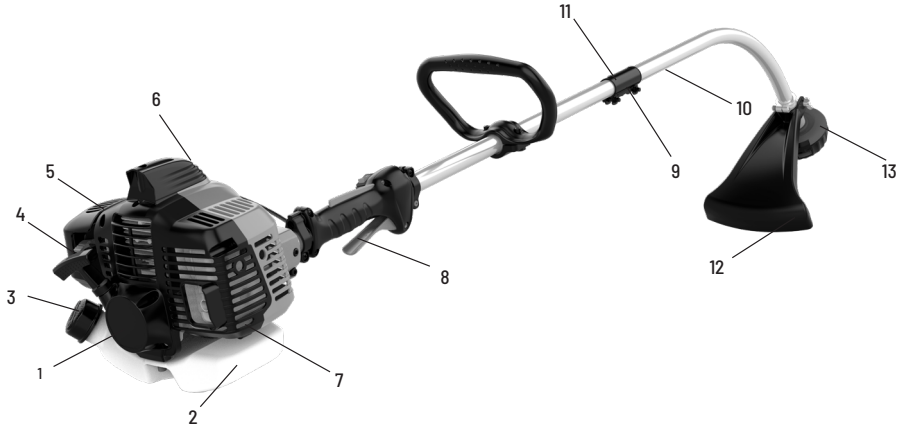


WARNING

Please make sure the cutting head has been assembled correctly before use.

NOTE: The packaging material is made of recycle materials. Dispose of packaging materials in accordance with regulations.

FEATURES & TECHNICAL DATA



- | | | |
|---------------------|-----------------------|----------------------|
| 1. Starter | 6. Spark Plug | 11. Shaft Connector |
| 2. Fuel Tank | 7. Rear Housing Cover | 12. Protection Guard |
| 3. Fuel Tank Cap | 8. Rear Handle | 13. Nylon Head |
| 4. Choke Lever | 9. Front Handle | |
| 5. Air Filter Cover | 10. Shaft | |

MODEL	LMB261
Idle speed (r/min)	3000 +/- 300
Nylon Head	Twin Line Tap & Go Head
Engine	Air-Cooling, 2 Stroke
Spark Plug	NGK BPMR7A / BOSCH WSR6F
Displacement (cc)	25.4
Maximum Cutting Speed	9000 +/- 500
Maximum Cutting Diameter	380mm
Maximum Output (kw)	0.9KW
Ignition	Electronic
Spool For Grass Trimmer	2.0 Diameter Line x 4m Length
Method of Starting	Soft Start Recoil
Fuel Used	Gasoline mixed with 2 stroke oil 25:1
Fuel Tank Capacity	500ml
Weight	4.6kg

Technical Data is subject to change without notice.

OPERATION

1. FUEL & OIL MIXTURE

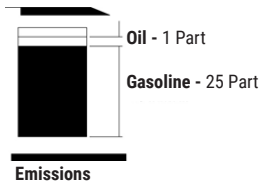
Never use oil for 4-cycle engine use or water-cooled 2-cycle engine. It can cause spark plug fouling exhaust port blocking or piston ring sticking. Mixed fuels, which have been left unused for a period of one month or more may clog the carburetor or result in the engine failing to operate properly. Put remaining fuel into an airtight container and keep it in the dark and cool room.

DANGER

Fuel is explosive. Turn off and cool the motor down before filling the tank with fuel. You must observe all safety instructions relating to handling fuel.

Fuel used for this model is a mixture of unleaded gasoline and approved engine lubricant. When mixing petrol with two-cycle engine oil, use only petrol that DOES NOT contain ETHANOL or METHANOL (types of alcohols).

Use 91 unleaded petrol to fuel the unit. This will help avoid possible damage to the engine fuel lines and other engine parts.



FUEL

The engine uses two-stroke fuel. If you have emission requirements, the mixture ratio of the fuel to oil should be 25:1

Be careful, a wrong mixture of the fuel will cause machine failure.

Petrol	2-Stroke Oil
1 Litre	40 ml
2 Litre	80 ml
5 Litre	200 ml

PETROL

Use 91 and above unleaded fuel.

STORING FUEL

The tank to store the fuel should be clean, anti-static, high-temperature-resistant, fire prevention and safe.

IMPORTANT

Two-stroke fuel may separate. Shake fuel container thoroughly before every use. Do not mix more fuel than you expect to use within a month. Take care of the emission of exhaust gases. Always shut off engine before fueling. Never add fuel to a machine with a running or hot engine. Never smoke whilst refueling and avoid inhaling the petrol fumes. Carefully open the tank top as pressure could have formed inside.

BEFORE REFUELING

- Shake the fuel mixture container well.
- Place the machine on a flat stable surface, with the fuel tank cap facing upwards.
- Clean the fuel tank cap and the surrounding area to avoid any dirt from entering the tank during refilling.
- Carefully open the fuel tank cap to allow the pressure inside to decrease gradually. Use a funnel to refill and avoid filling the tank to the brim.
- Unscrew the tank cap and remove it.
- Pour in the fuel carefully, avoid spilling.
- Screw the tank cap on firmly by hand.



DRAINING FUEL

- Hold a collection container beneath the fuel drain bolt.
- Unscrew the fuel cap and remove it.



- Allow the fuel to run out completely
- Screw the fuel cap on firmly by hand.

WARNING

Always close the fuel tank cap firmly. Immediately clean all traces of fuel which may have dripped on the machine or the ground and do not start the engine until the petrol fumes have dissipated.

2. RULES FOR SAFE OPERATION

WARNING

Read the "Rules for Safe Operation" with care and follow the instructions in the manual to operate the unit safely.

Read and be thorough with the basic controls and functions of the unit. It is important that you know how to stop and to shut off the engine, and to unhook a harnessed unit quickly.

Do not allow anyone without proper instruction or training to operate the unit. All operators of the unit should wear appropriate foot, leg, eye, face and hearing protection. Do not rely on the debris shield on the unit to protect your eyes from thrown objects.

Keep the area clear of bystanders, children and pets. Never allow children to operate or play with the unit. Do not allow anyone to enter the operating DANGER ZONE with you. The danger zone is an area 15 meters in radius (about 16 paces) or 50 feet.



Insist that persons in the RISK ZONE beyond the danger zone wear eye protection from thrown objects. If the unit must be used where there are unprotected people, operate at a low throttle speed to reduce the risk of thrown objects.

Move the stop switch to "stop" position when the engine idles, insure its reliable before cutting. Only may continue to operate the unit when stop switch is in good condition.

Routines for checking that the cutting attachment stops turning when the engine idles.

WARNING

In addition to head, eye, face and ear protection,

please wear appropriate footwear to protect your feet and to improve footing on slippery surfaces. Do not wear open-toed footwear, or go bare foot or bare legged.

3. PREPARING FOR OPERATION

IMPORTANT

Failure to follow proper fuel mix instructions may cause damage to the engine.

When preparing fuel mixture, mix only the amount needed for the job you intend to do. Do not use fuel that has been stored longer than two months. Fuel mixture stored longer than this will cause hard starting and poor performance. If fuel mix has been stored longer than this time, it should be removed and filled with a fresh mixture.

WARNING

- Never fill the fuel tank to the brim. (Under 3/4 of the tank)
- Never add fuel to the tank in a closed non-ventilated area.
- Do not add fuel to this unit close to an open fire or sparks.
- Be sure to wipe spilled fuel before attempting to start the engine
- Do not attempt to refuel a hot engine.

CHECK POINTS BEFORE OPERATION

- Check for loose bolts, nuts and fittings.
- Check the air filter for dirt. Clean before operation.
- Check to be sure that protector is securely in place.
- Check that fuel isn't leaking.
- Check to be sure the line is fixed and ready to operate.

STARTING THE TRIMMER

1. Turn the engine switch to the ON position



NOTE: the "0/I" switch would always stays in "I" position, please make it to "0" by hand if needed.

2. Adjust the choke lever to (off / ) position



3. When the grass trimmer is used and started for the very first time, the final user is warmly recommended to push the primer pump for 7 times at least, so has to obtain the best performance of the equipment for future use as well.



4. Pull the starter grip slowly for 10 - 15 cm until you feel some resistance, then tug it a few times until you hear the engine turn over, as following picture.



5. Adjust the choke lever to (on / ) position

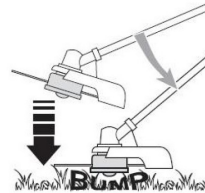


6. Pull the starter handle until the engine starts



NOTE: Allow the engine running 1 minute to warm up before starting working

7. Press trigger A to accelerate and operate
8. If use Nylon cutter, before cutting, need to bump it to feed line firstly.



9. If you need stop cutting head working, release the throttle trigger A and B. If any problem occurs, press the engine switch, the machine will stop running.



1. CUTTING WITH A NYLON HEAD

Looking down on the unit, the line head rotates in a clockwise direction. The CUT-OFF KNIFE will be on the right side of the debris shield.

WARNING

A proper debris shield must be in place on the unit when a nylon cutting line is used. The cutting line can flap around if too much line is exposed. Always use the plastic debris shield with cut-off knife when using nylon cutting heads.

For nearly all cutting, it is good to tilt the line head so that contact is made on the part of the line circle where the line is moving AWAY from you and the debris shield. (See appropriate picture) This results in the debris being thrown AWAY from the working direction.

WARNING

Tilting the head in the other direction will result in debris shooting TOWARDS the direction you are working. If the line head is held flat to the ground so the cutting occurs on the whole line circle, debris will still be THROWN in your working direction. Drag will slow the engine down, and you will use up a lot of line.

WARNING

Use only quality nylon monofilament line that is 2.0mm in diameter. Never use wire or wire reinforced line in place of nylon trimmer line.

WARNING

Use extreme caution when operating over bare spots and gravel. The line can throw small rocks at high speeds and can cause injury. Debris shields on the unit cannot stop objects bouncing off hard surfaces.

PRACTICAL TIPS

Practice all operating techniques with the engine switched off before starting to use the machine.

CAUTION

Remove all grass and weed remains at regular intervals to prevent the shaft tube overheating. Grass and weed remains become trapped under the safety shield and they prevent the shaft tube receiving adequate ventilation. Remove the remains carefully using a screwdriver or the like.

DIFFERENT CUTTING METHODS

If the machine is correctly assembled with the safety hood and cutting head it will cut weeds and long grass in places with difficult access, for example along fences, walls and foundations and also around trees. It can also be used for mowing work to remove vegetation to allow the better preparation of a garden or to clear a certain area down to the soil.

PLEASE NOTE: Even if it is used carefully, cutting around foundations, stone or concrete walls, etc. Will result in the line suffering more than normal wear.

TRIMMING / MOWING

Swing the trimmer from side to side in a scything motion. Always keep the cutting head parallel to the ground. Check the site and decide what cutting height you require. Guide and hold the cutting head at the required height to ensure that you cut evenly.

LOWER TRIMMING

Hold the trimmer right in front of you at a slight angle so that the underside of the cutter head is above the ground and the line strikes the correct target. Always cut away from yourself. Never draw the trimmer towards yourself.

CUTTING ALONG FENCES / FOUNDATIONS

When cutting approach wire mesh fences, lath fences, natural stone walls and foundations slowly so that you can cut close to them without striking the obstacle with the line. If, for example, the line strikes stones, stone walls or foundations, it will wear or fray. If the line strikes wire fencing it will break.

TRIMMING AROUND TREES

When trimming around tree trunks, approach slowly so that the line does not strike the bark. Walk around the tree, cutting from left to right. Approach grass or weeds with the tip of the line and tilt the cutting head forwards slightly.

WARNING

Take extreme care during mowing work. When doing such work keep a distance of 30 meters between yourself and other people or animals.

MOWING

For mowing you want to cut all the vegetation down to the ground. To do this, set the cutting head at an angle of 30° to the right. Place the handle in the required position. Remember the increased risk of injury to the user, watchers and animals and the

danger of damaging other items due to objects (for example stones) being thrown out.

WARNING

Do not remove any objects from footpaths, etc. using the trimmer. The trimmer is a powerful tool and can throw small stones and other objects a distance of 15 meters or more, causing injuries and damage to cars, houses and windows.

EXTENDING THE CUTTING LINE

WARNING

Do not use any kind of metal wire or metal wire encased in plastic in the cutting head. This may cause serious injuries to the user.

To extend the cutting line run the motor at full speed and tap ("BUMP") the cutting head on the ground. This will automatically extend the line. The blade on the safety shield will cut the line to the appropriate length.

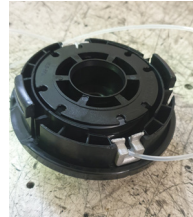
REPLACING LINE

1. Unclip the housing from the line trimmer and remove spool from the spindle.
2. Remove all remaining cutting line from the spool.
3. Cut 4m of line. Fold in half and attach the middle of the line into the groove/slot located in the center of the spool.

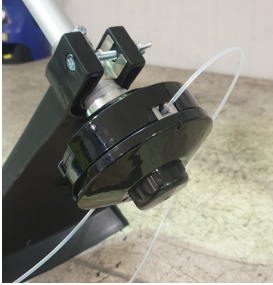
4. Wind both sides of the line on to the spool with tension in the same direction as shown on the inside of the spool. (See above right image).
5. Continue to wind the line until you have 150mm of line left on each end. Note: It is helpful to clip and fasten the line on opposite ends of the spool to keep the line from unraveling during the next step.



6. Put the spool into housing. Unclip the line from the spool and place line through the open eyelet on opposite ends of the housing. Ensure the line has not tangled.



- Clip the housing back onto the line trimmer



MAINTENANCE & STORAGE

It is the operator's responsibility to complete all scheduled maintenance and or servicing in a timely manner. Always correct any issues before operating the line trimmer. Follow all inspection and maintenance recommendations that are listed in the manual.

WARNING

Improper maintenance and or failure to correct problems prior to operating the unit may cause the unit to malfunction and result in property damage and or serious personal injury. Improper maintenance and servicing may void warranty.

During maintenance operations:

- Remove the spark plug cap.
- Wait until the engine is sufficiently cold.
- Never dispose of oils, fuel or other polluting materials in unauthorized places.

Before performing any maintenance or cleaning work, always turn off the engine.

1. Do not spray the unit with water. Ingress of water may damage the engine and electrical connection.
2. Clean the unit with a cloth, hand brush, etc.

MAINTENANCE SCHEDULE

	12 hours of use	24 hours of use	36 hours of use
Air Filter	Clean	Clean	Replace
Spark Plug	Check	Clean	Replace

Expert inspection is required:

- If the grass trimmer strikes an object.
- If the motor stops suddenly
- If the nylon cutter is damaged
- If the nylon head connector is damaged.

Replacing and re-cleaning the nylon spool at the end of the trimming season. Always re-cleaned the nylon spool or, if required, replace the nylon spool with a new one. Always have the nylon spool re-cleaned or replaced by a LawnMaster Service Dealer.

AIR FILTER

Accumulated dust in the air filter will reduce engine efficiency, increase in fuel consumption, and allow abrasive particles to pass into the engine. Remove the air filter as often as necessary to maintain in a clean condition.

Light surface dust can readily be removed by tapping the filter. Heavy deposits should be washed out in suitable solvent.

Remove filter cover by loosening air filter cover knob.

NEVER run the engine without an air filter element installed.



FUEL FILTER

Fuel tank is fitted with a filter. The filter is situated at the free end of fuel pipe and can be picked out through fuel port with a piece of hooked wire or the like.

Check the fuel filter periodically. Do not allow dust to enter into fuel tank. Clogged filter will cause difficulty in starting engine or abnormalities in engine performance.

When filter is dirty, replace the filter.

When the inside of the fuel tank is dirty, it can be cleaned by rinsing the tank out with petrol.

CHANGE / CLEAN SPARK PLUG

- Periodically remove and clean the spark plug using a metal brush to get rid of any deposits.
- Check and reset the correct distance between the electrodes.
- Replace the spark plug and fasten it firmly using the supplied wrench.
- The spark plug must be replaced with one with the same characteristics whenever the electrodes have burnt or the insulation has worn, and in any case every 100 working hours.



STARTING UNIT

To avoid overheating and damage to the engine, always keep the cooling air vents clean and free of sawdust and debris. If you notice signs of wear on the starter cable, contact your Local LawnMaster Dealer for a replacement.

NUTS & SCREWS

Periodically check that all the nuts and screws are securely tightened and the hand grips are tightly fastened.

ORDERING REPLACEMENT PARTS

Please quote the following data when ordering replacement parts:

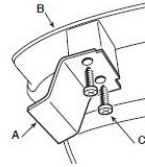
- Type of machine
- Article number of the machine
- Identification number of the machine
- Replacement part number of the part required

STORAGE

At the end of each working session, carefully clean the machine of dust and debris, and make sure that there are no damaged parts, replacing any faulty parts. The machine must be stored in a dry place away from the elements and with the cover correctly fitted.

SHARPENING THE LINE CUTTING KNIFE

- Remove the line cutting knife (A) from the guard (B) by unscrewing the screws (C).
- Fix the line cutting knife in a vice and sharpen it using a flat file, being careful to retain the original cutting angle.
- Refit the knife on the guard.



DISPOSAL AND RECYCLING

The unit is supplied in packaging to prevent it being damaged in transit. This packaging is raw material and can therefore be reused or can be returned to the raw material system. The unit is made of various types of material, such as metal and plastic. Defective components must be disposed of as special waste. Ask your LawnMaster dealer or your local council for guidance.

TROUBLESHOOTING

Before performing any maintenance or cleaning work, always turn off the engine and wait until the cutter has come to a standstill.

THE ENGINE WONT START OR KEEP RUNNING

- Reassemble the nylon cutter.
- Check that whether there is no fuel or be used out.
- Incorrect starting procedure— Follow the instructions
- Dirty spark plug or incorrect distance between the electrodes- Check the spark plug
- Air filter clogged- Clean and/or replace the filter
- Carburator problems- Contact local LawnMaster dealer
-

THE ENGINE STARTS BUT IS LACKING POWER

- Have nylon spool replaced - Contact local LawnMaster dealer
- Air filter clogged— Clean and/or replace the filter
- Carburator problems- Contact local LawnMaster dealer

THE ENGINE RUNS IRREGULARLY AND LACKS IN POWER WHEN REVVED

- Dirty spark plug or incorrect distance between the electrodes- Check the spark plug
- Carburator problems—Contact local LawnMaster dealer

THE ENGINE MAKES TOO MUCH SMOKE

- Incorrect composition of the fuel mixture- Prepare the fuel mixture according to the instructions.
- Carburator problems- Contact local LawnMaster dealer

THE CUTTING DEVICE MUST NOT MOVE WHEN THE ENGINE IS RUNNING IDLE

- Incorrect carburator regulation - Contact local LawnMaster dealer
-

THE MACHINE STARTS TO VIBRATE ABNORMALLY

- Damaged or loose parts- Stop the machine and disconnect the spark plug cable Inspect for damage. Check for and tighten any loose parts. Have all checks, repair work and replacements carried out by a LawnMaster Service Dealer.

IF THE TEMPERATURE OF MACHINES IS TOO HIGH

- Ensure the machines have rest at regular time.
- Faults which cannot be rectified with the aid of this table may be rectified by a LawnMaster Service Dealer.

WARRANTY

Subject to the following conditions, this unit is covered by a comprehensive two-year warranty.

The unit is designed for domestic purposes only, issues and faults due to commercial use may not be covered by warranty. The warranty covers all manufacturing faults but excludes normal wear and tear, misuse, neglect, accidental damage or defects arising from failure to comply with instructions as outlined in this owners manual. Only genuine spare parts can be used for repairs and this must be carried out by an authorised LawnMaster Services Dealer to maintain warranty.

Warranty does not cover the cost of transportation of any part(s) but does cover the labour/parts cost incurred in repairing or replacing any defective part(s) consequential or special damages and / or expenses resulting from any defect.

If the unit requires further repairs or services please visit www.lawnmaster.co.nz to find your local LawnMaster dealer.

For all other enquiries contact **Steelfort Customer Services +64 6 350 1350**

LawnMaster®

FIND US



www.lawnmaster.co.nz



lawnmasternz

Steelfort

500 Rangitikei Street, Private Bag 11045
Palmerston North, 4412, New Zealand
06 350 1350

Steelfort Auckland

880 Great South Road, Penrose
Auckland, 1061, New Zealand
09 573 1324